

ONE SIZE

Hooded Infinity

SCARF BY DIBY.CLUB



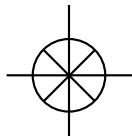
1/5 DIFFICULTY



USE HASHTAG #HOODEDSCARF



FREE
PATTERN



NO TRIM



PDF PATTERN

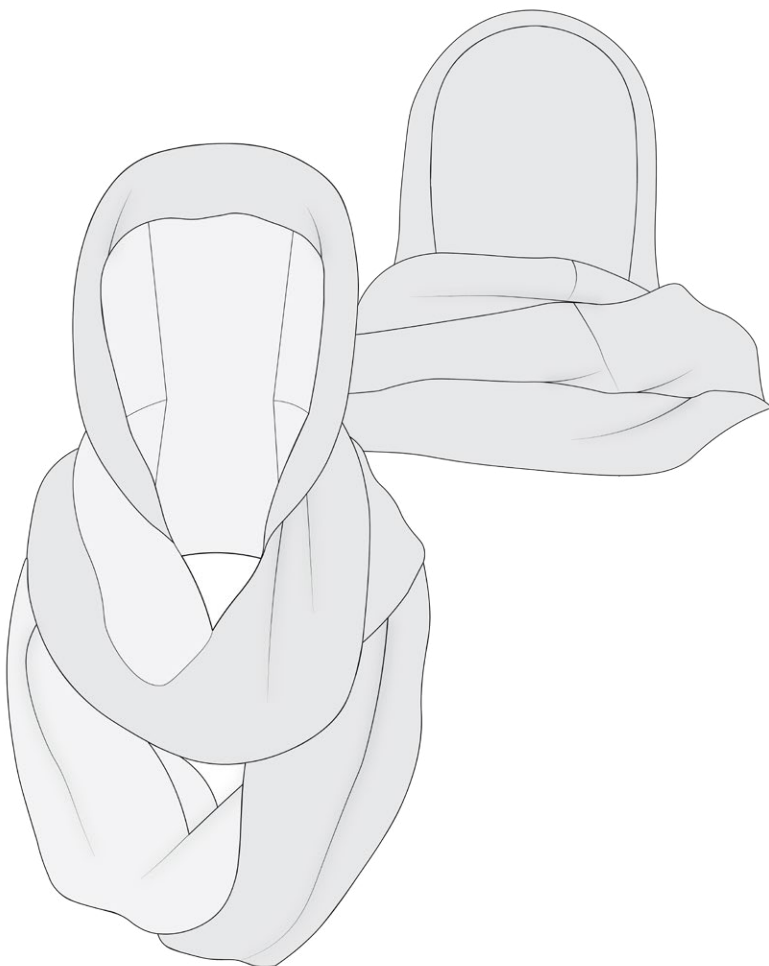
FABRIC RECOMMENDATIONS & OPTIONS

The Hooded Infinity Scarf is the coziest scarf you've ever owned! It has plenty of length so you can wrap around your shoulders like a shawl or wear it like normal. The bonus hood will surely keep you warm and looking fabulous. Check out all of the options this pattern has to offer and to sign up for our **Sewing Insider** details to find out about new pattern hack tutorials!

FABRIC RECOMMENDATIONS:

This pattern was drafted for lightweight **WOVENS** with **NO** stretch or **KNITS** with **2-WAY** horizontal stretch only. Experiment with these fabric options for different looks:

- WOOL
- CASHMERE
- FLANNEL
- JERSEY KNIT
- POLYESTER



FABRIC REQUIREMENTS

Here is a list of the required amounts of fabric for each option included in this pattern. The *lining fabric* can be cut from the same fabric as your main fabric unless you desire a contrast.

This chart is calculated for 45" wide fabrics and recorded in number of yards required.

	YARDS	METERS
Main Fabric	1 3/8	1.25
Lining Fabric	1 3/8	1.25



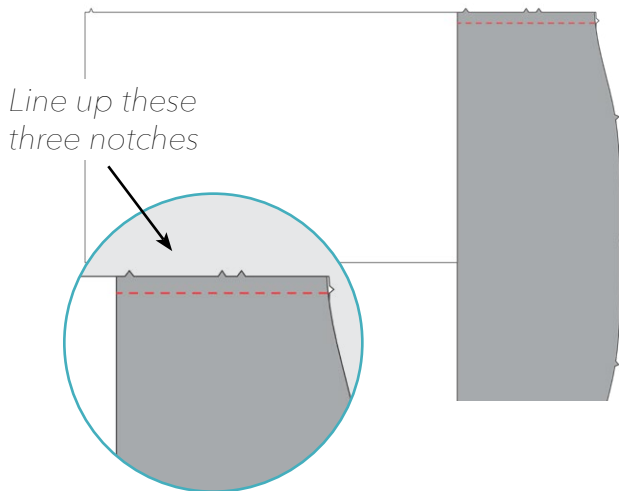
This pattern coordinates well with  **The Nora** sweater pattern.



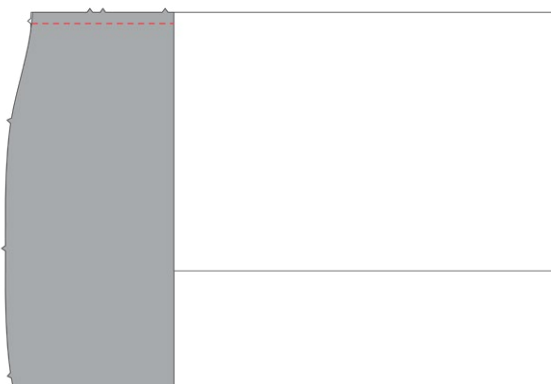
SCARF CONSTRUCTION

This scarf is so quick and easy to make, you can sew one together in an afternoon!

1. Lay your pattern piece labeled *hood* face down on a *scarf* piece with *right sides* together. Position your hood so that it is perpendicular to your scarf. Locate the three notches on the side of the hood and line them up with the corresponding notches on your scarf. If the notches do not match up with the right sides together, then use the other scarf piece. Sew these pieces together.



2. Repeat this process again with your second scarf piece, sewing it to the other end of your hood piece. Make sure your hood and scarf pieces are *right sides* together and the three notches line up.

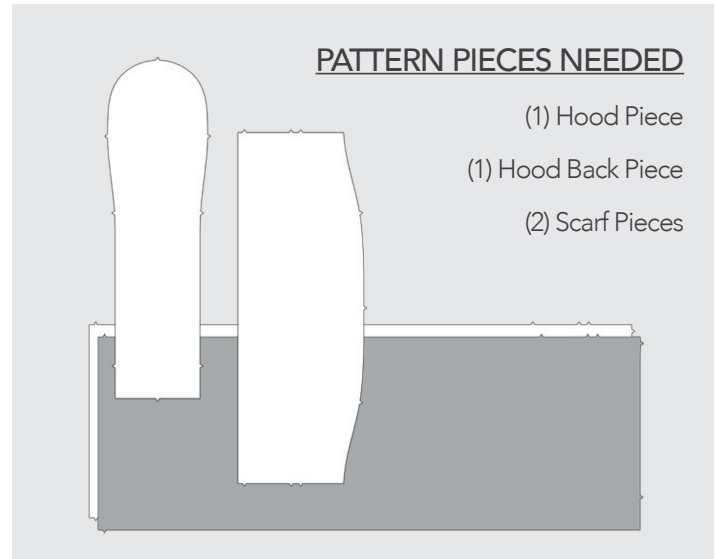


PATTERN PIECES NEEDED

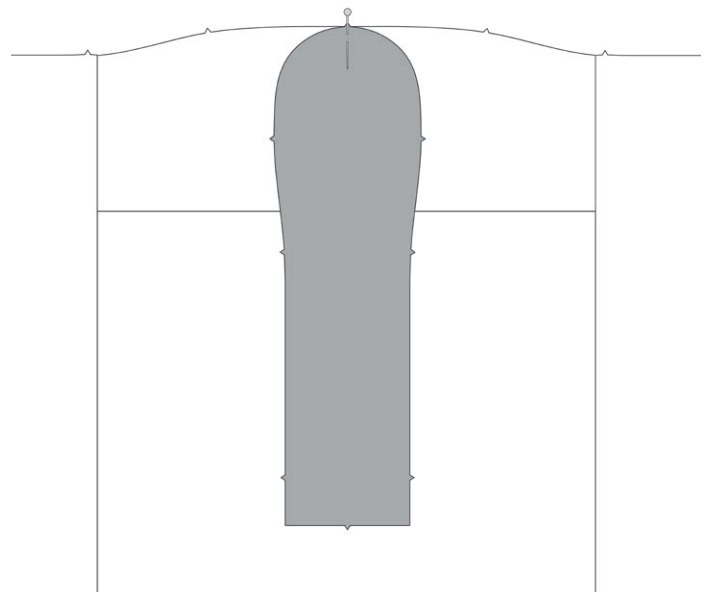
(1) Hood Piece

(1) Hood Back Piece

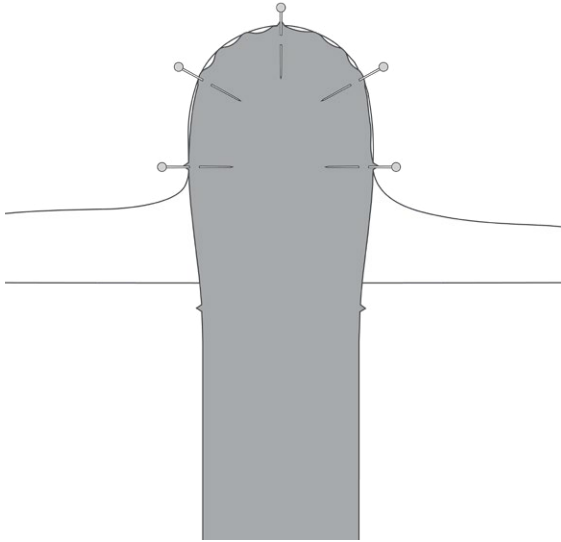
(2) Scarf Pieces



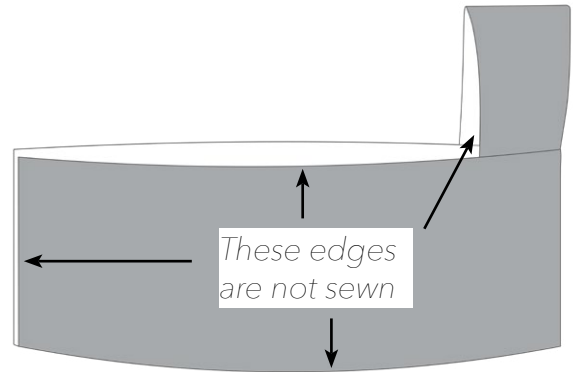
3. Lay your hood and scarf pieces face up and place your *back hood* piece on top so that *right sides* are together. Line up the center notch at the top curve of the back hood with the center notch of the hood piece. Place a pin at this location.



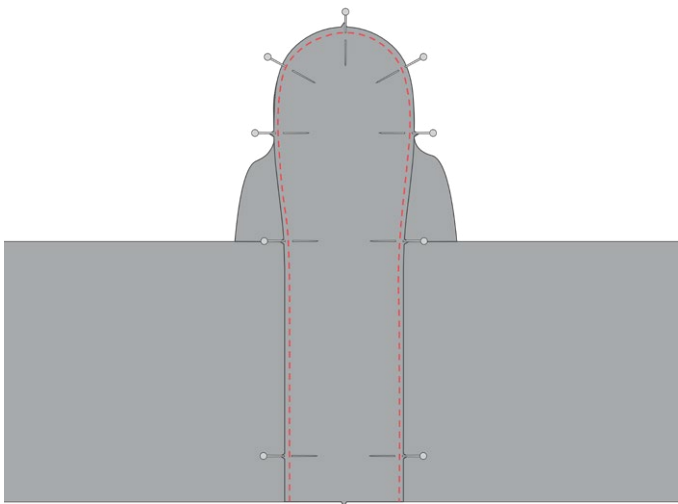
4. Working your way down the curved sides of the hood and back hood pieces line up the first set of notches and place a pin at each notch. The curve of your back hood will ripple as you pin it. Place pins in between the notches to even out the ripples.



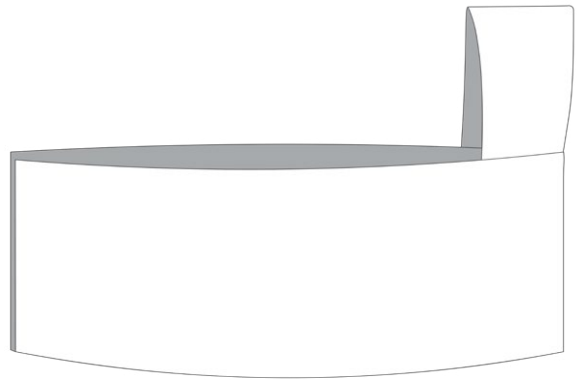
6. Your scarf will now look like this with the top, bottom, and ends of the scarf edges as well as the front edge of the hood still raw. Set this piece aside.



5. Continuing down, line up the next set of notches on the back hood with the seams of where the hood and scarf pieces were sewn together. Place a pin at these locations. Then finally line up the last set of notches near the bottom of the back hood and scarf pieces and pin into place. Starting at the bottom, sew around the entire edge of your back hood joining it together with your scarf and hood.

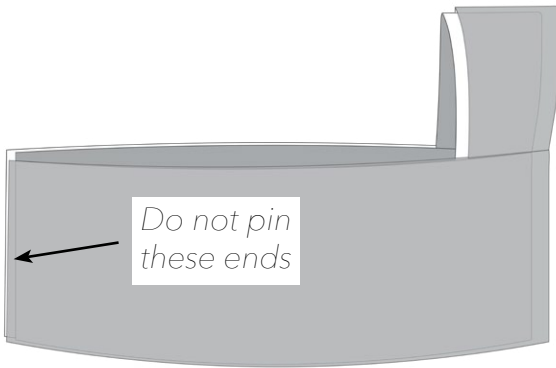


7. Repeat steps 1-5 with the remaining hood, back hood, and scarf pieces so that you have a second identical scarf. This will be referred to as the scarf lining. Turn the scarf lining right side out.

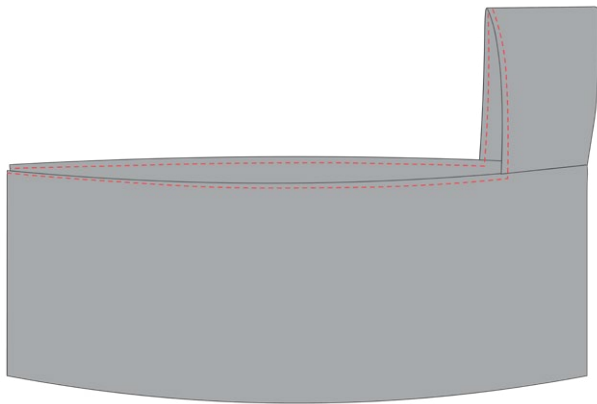


SCARF ASSEMBLY

1. At this point you will have two identical scarfs constructed. Start by placing your scarf lining inside your main scarf with the **right sides** together. Line up your seams and the raw edges and pin them together.



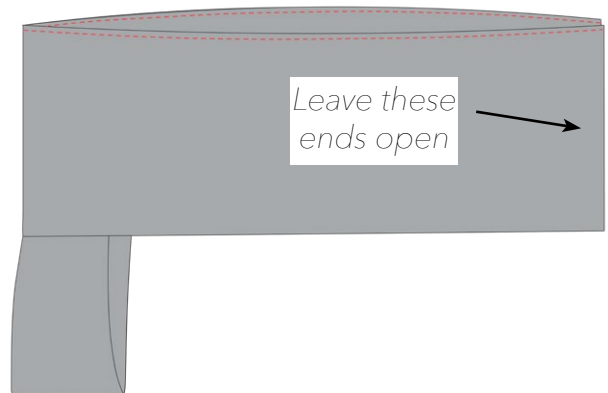
2. Starting at the end of your scarf, sew around the top edge, pivoting at the hood, sewing around the front rim of the hood, and back to the other end of the scarf.



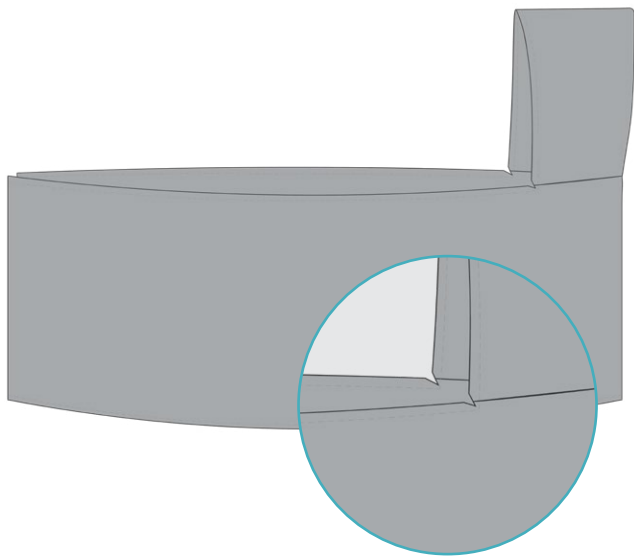
PATTERN PIECES NEEDED

(2) Fully Constructed Scarf Pieces

3. Line up the raw edges on the bottom of the scarf and pin together. Then sew around the entire bottom edge of your scarf. Your scarf ends will not be sewn together and they will each have an opening.



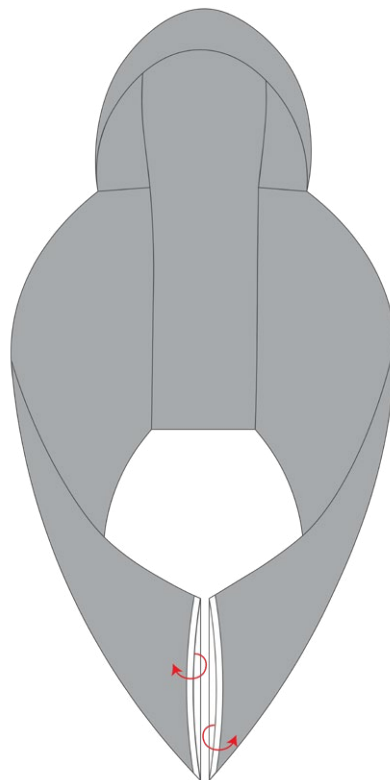
4. Trim your edges and cut into the seam at the corners of the hood. Cut close to the stitches without cutting into the stitches. This will give you clean corners and seams once your scarf is turned right side out.



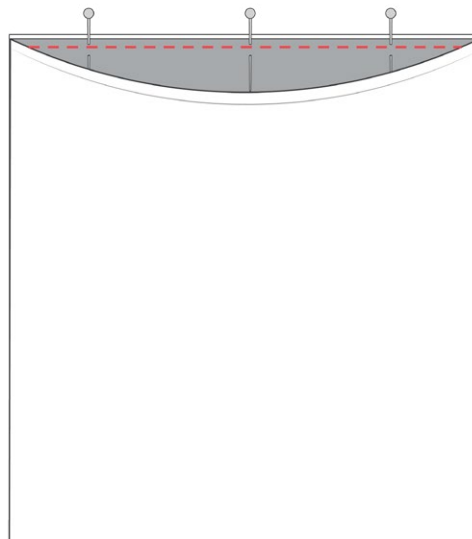
5. At each opening at the ends of your scarf, turn back and press a 1/2" seam.



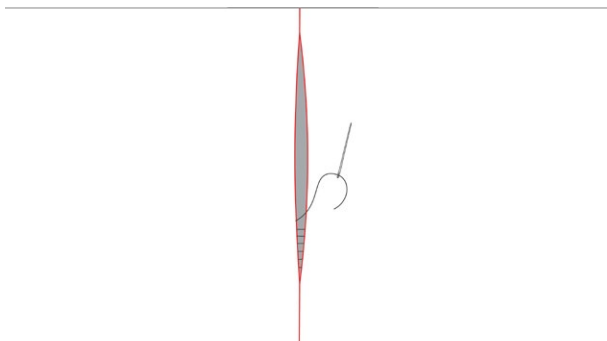
6. Turn your entire scarf right side out by reaching inside an opening and pulling the fabric out until the entire scarf is right side out.



7. Pin the scarf ends together making sure that just two layers are pinned. Sew around the ends as much as possible with the sewing machine. You will not be able to sew the entire round with your sewing machine.



8. With a needle and thread use a ladder stitch to sew the rest of the opening closed. Use the crease you made earlier as a stitching guide.

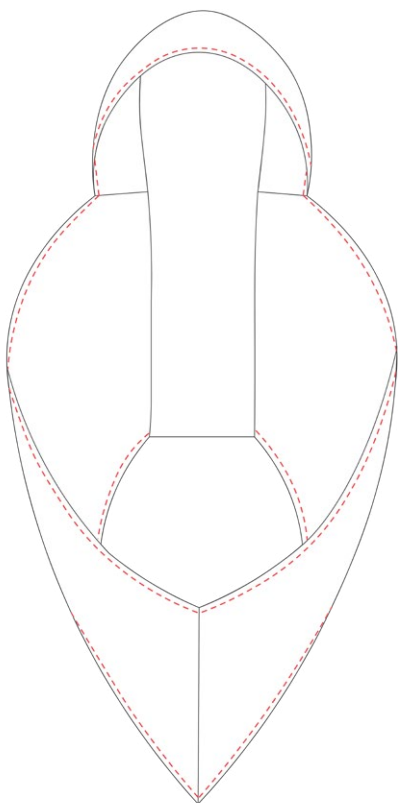


LEARN HOW TO SEW A LADDER STITCH

Follow this tutorial to learn how to sew a ladder stitch for an invisible seam!

[Sew a Perfect Ladder Stitch](#)

9. As an option, topstitch 1/4" from the edge of all your seams or just around the hood. Give your seams a final press.



Congratulations!

I did it! That was fun!

Now what?...



Oh, we're just getting started.



SHARE YOUR CREATION

Now that you've finished, share your creation!

Share a photo of your finished creation for everyone to see! Take a selfie and share it with the DIBY Club Facebook group. Want to share it somewhere else? Awesome! **Use hashtag #HOODEDESCARF so we can find it!**



INSPIRE SOMEONE

inspire someone

SHARE NOW